

# DURATEMP<sup>®</sup>

CORPORATION



## Sweepout Assemblies

Proper sweepout assemblies are essential to obtaining the best ware handling in the hot end. Dura Temp offers three generations of sweepout assemblies to achieve the correct combination of adaptability and rigidity necessary for any job. Fundamental to the design of Dura Temp sweepout assemblies are the drop-on style pockets.

### Benefits

Excellent straight-lining of containers on the machine conveyor

Increased pack rate

Easier and faster job changes

Reduced machine downtime because of the "quick-change system"

Low labor requirements

Lightweight

Available in single, double, triple and quadruple gob configurations

Drop-on pockets allow for rapid change-over from differing container diameters

Clamp brackets adapt to various pusher head designs

Custom designs available

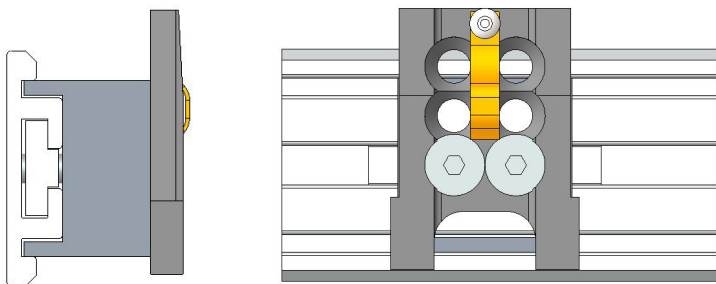




# DURA TEMP<sup>®</sup>

CORPORATION

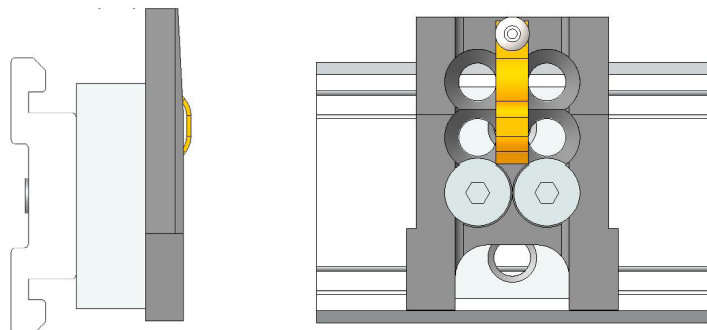
## GENERATION I sweepout assembly



- Provides maximum flexibility
- Adjustable center-to-center spacing
- Adjustable offset spacing

*Suggested Use: frequent job change, trialing new assemblies*

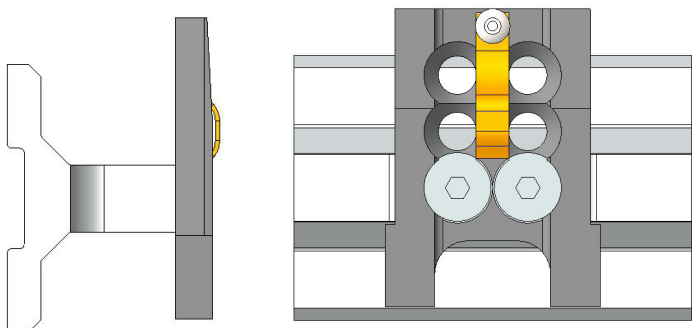
## GENERATION II sweepout assembly



- Combination of flexibility and durability
- Fixed center-to-center spacing
- Adjustable offset spacing

*Suggested Use: known/fixed center-to-center spacing*

## GENERATION III sweepout assembly



- Maximum durability
- Fixed center-to-center spacing
- Fixed offset spacing

*Suggested Use: long running jobs, fixed setup to reduce accidental adjustments*